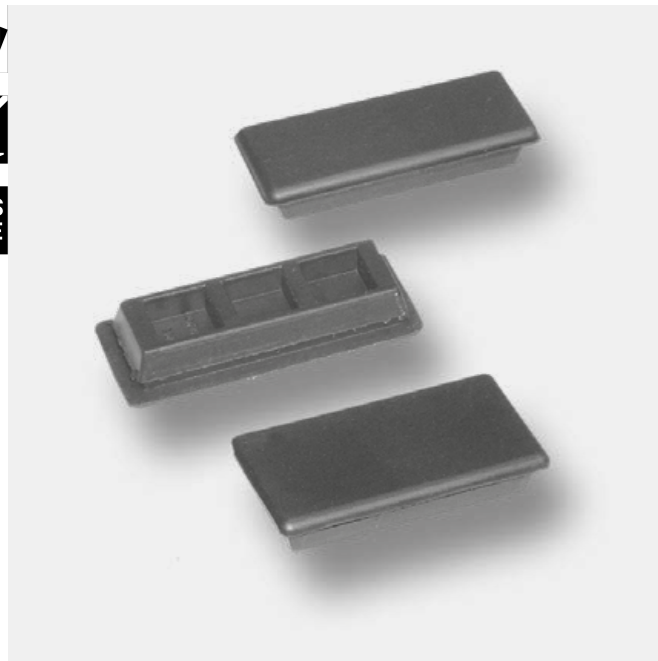


# Complementary Products



# Overview

- |   |  |  |  |  |  |
|---|--|--|--|--|--|
|   |  |  |  |  |  |
| 754 DST Cutout-Cover [5-960DST]                         | 755 DST Reinforcement Plate [6-079DST] | 756 DST Tools for Uninstallation [6-080DST]          | 757 Multi Key [6-101]                    | 757 Universal Rail Key Stainless Steel [6-105] | 758 Key [6-100]                            |
|   |  |  |  |  |  |
| 760 Door Catcher with Catch Pin Stainless Steel [7-911] | 761 Drawing Pocket [6-220]             | 762 Window oval [6-225]                              | 763 Window [6-227]                       | 764 Cover Stay [6-180]                         | 765 Telescopic Cover Support [6-174]       |
|   |  |  |  |  |  |
| 766 Telescopic Cover Support [6-170]                    | 768 Telescopic Cover Support [6-190]   | 769 Telescopic Cover Support Stainless Steel [7-300] | 770 Wind Stop [6-200]                    | 771 Wind Stop Stainless Steel [7-310]          | 772 Cable Tie Mount □9.5 and □12.7 [6-070] |
|   |  |  |  |  |  |
| 773 Cable Tie Mount [6-068]                             | 774 Velcro Cable Tie [6-078]           | 775 Wire Catch [6-060]                               | 776 Cable Management Device □9.5 [6-062] | 777 Cable Management Device □12.7 [6-061]      | 778 Clip-on Radius R30 [6-065]             |



**Advantages**

- DST Cutout-cover for cutout 30x7mm, 30x10mm, 30x14mm and 25x10mm.
- Tool-less installation.

**Materials**

- **Cutout-cover:** NBR, black or neoprene 70° shore

**Remarks**

(s) = 1.5 +/-0.1



**Advantages**

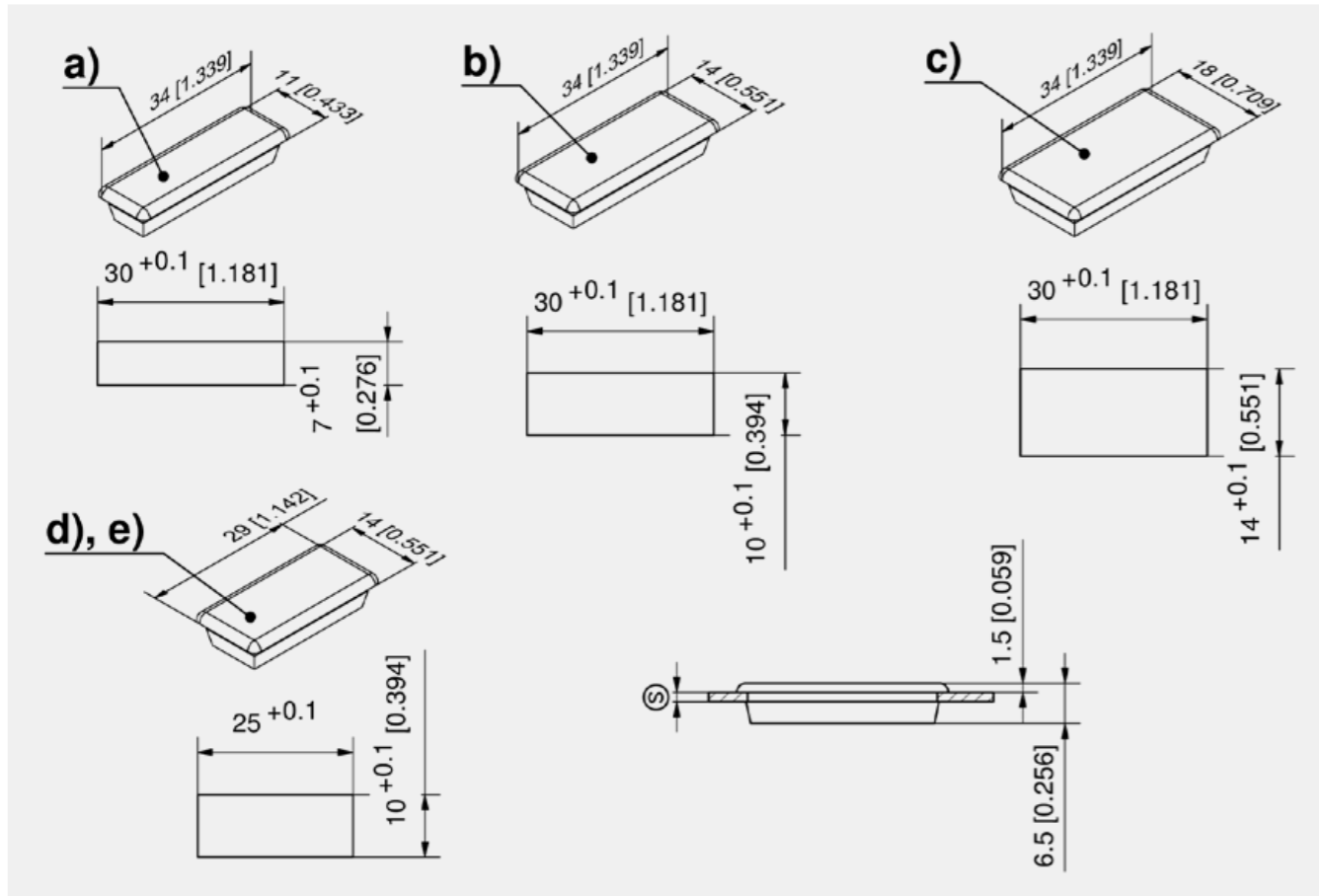
- DST Reinforcement plate for cutouts 30x8mm, 30x10mm, 30x14mm and 30x15mm.
- For using the DIRAK-SNAP-Technology in thin-walled sheets and for higher loads.
- Tool-less installation at the same time or later.
- This provides a vibration-proof connection of the reinforcement plate with the DST product.
- One side angled to be used at bendings.
- Can also be used for the un-installation of DST products with the a.m. cutouts.

**Materials**

- **Reinforced Plate:** steel, zinc plated

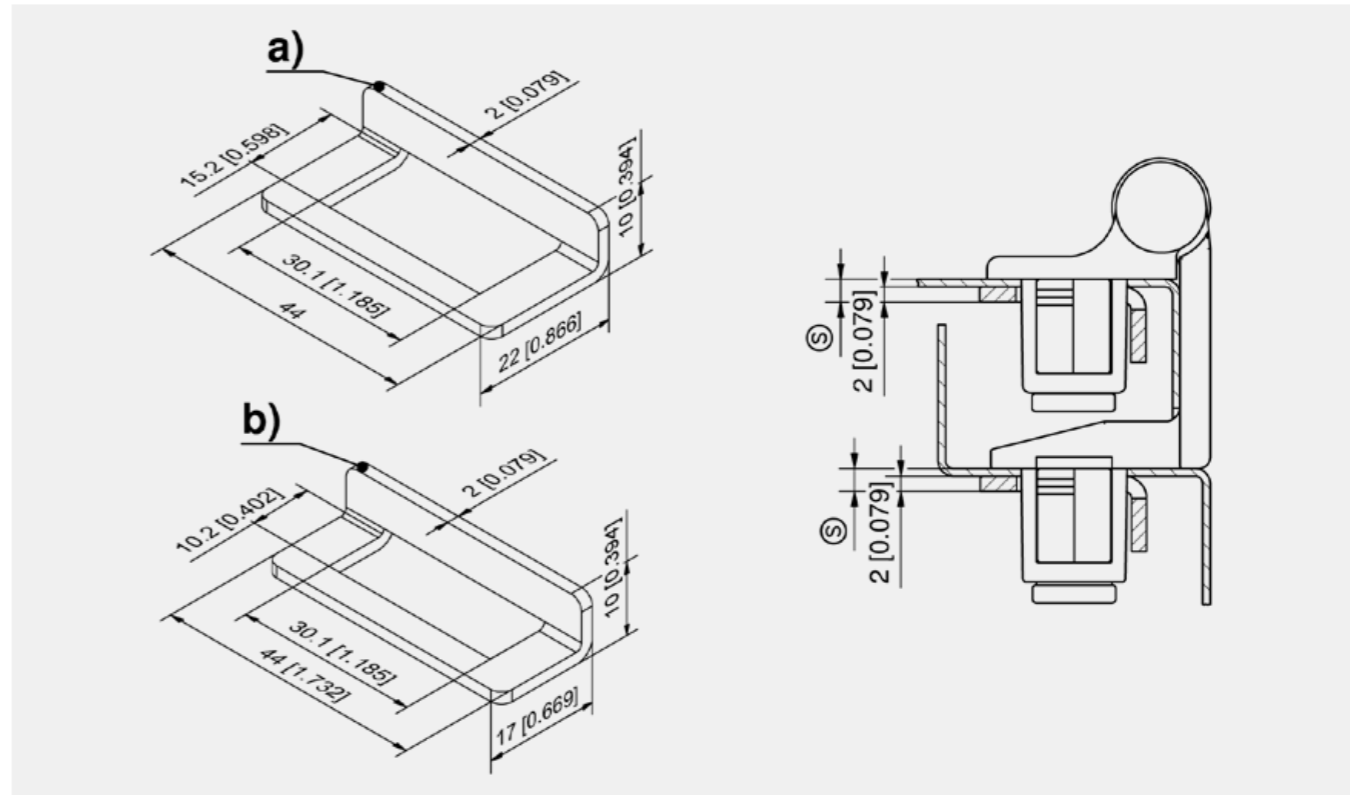
**Remarks**

The clamping range (S) results in sheet thickness and reinforcement plate.   
**Example:** Sheet thickness 1mm + reinforcement plate 2mm = 3mm clamping range (S)



Cutout-cover

	Part Number	Cutout	Material	Surface
a)	292-0401.00-03007	30x7 mm	NBR	black
b)	292-0401.00-03010	30x10 mm	NBR	black
c)	292-0402.00-03014	30x14 mm	NBR	black
d)	292-0403.06-09005	25x10 mm	neoprene 70°	black
e)	292-0403.06-07035	25x10 mm	neoprene 70°	light grey RAL 7035



Reinforcement plate

	Part Number	Cutout	Cutout 2	Material	Surface
a)	292-0701.15-01530	30x14 mm	30x15 mm	steel	zinc plated
b)	292-0702.15-01030	30x8 mm	30x10 mm	steel	zinc plated

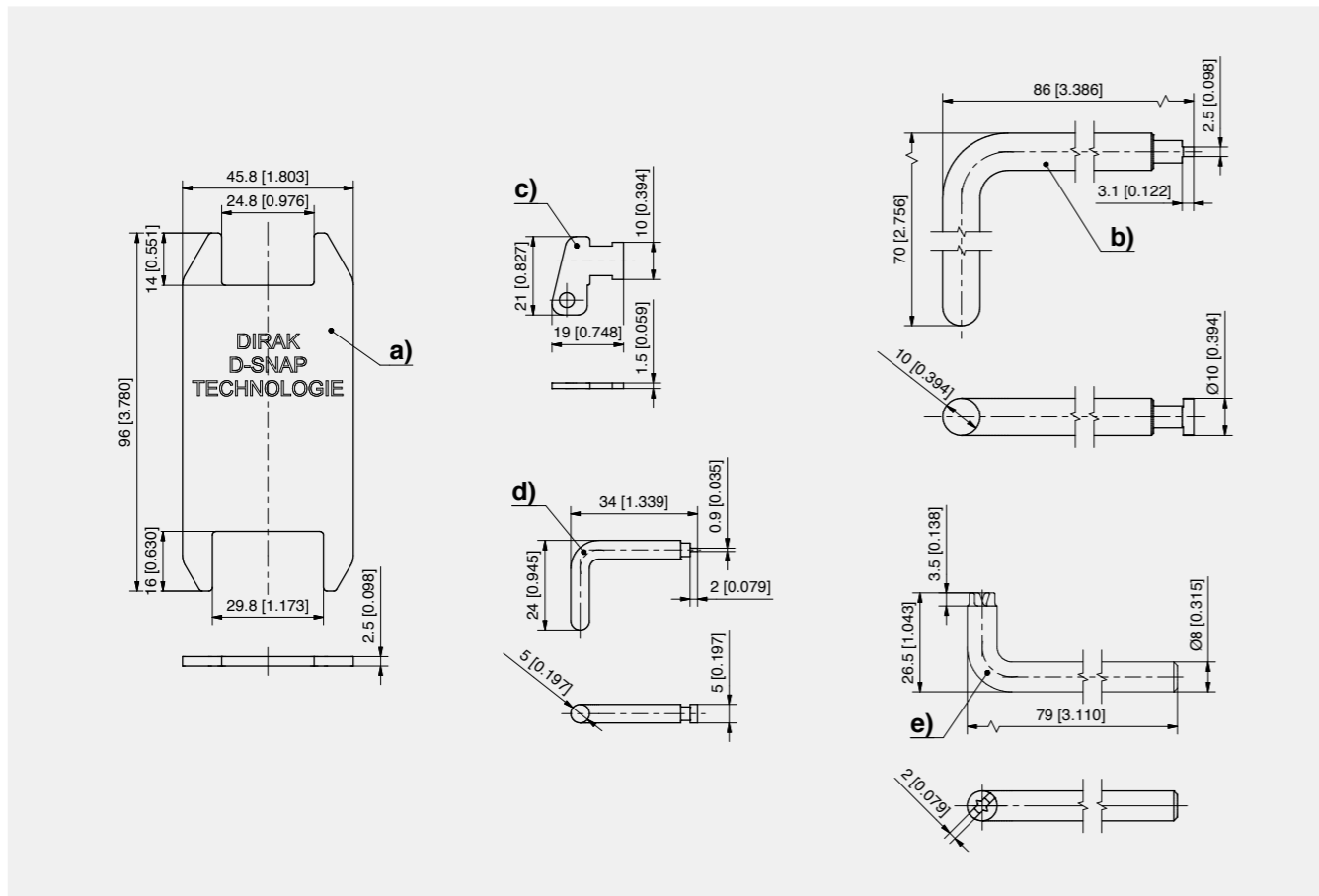


**Advantages**

- a) Tool for uninstallation for cutouts 30x8mm, 30x10mm, 30x14mm and 30x15mm and 25mm (0.984) length.
- b), d) and e) Tool for uninstallation of DST fasteners.
- c) Tool for uninstallation for cutout with 14mm and 15mm width.

**Materials**

- **Tool for uninstallation:** stainless steel, brass and steel zinc plated



Tool for uninstallation

	Part Number	Material	Surface
a)	292-0306.80-02530	stainless steel	
b)	292-0311.15-00000	steel	zinc plated
c)	292-0301.15-00000	steel	zinc plated
d)	292-0302.70-00000	brass	untreated
e)	292-0312.83-00000	stainless steel	

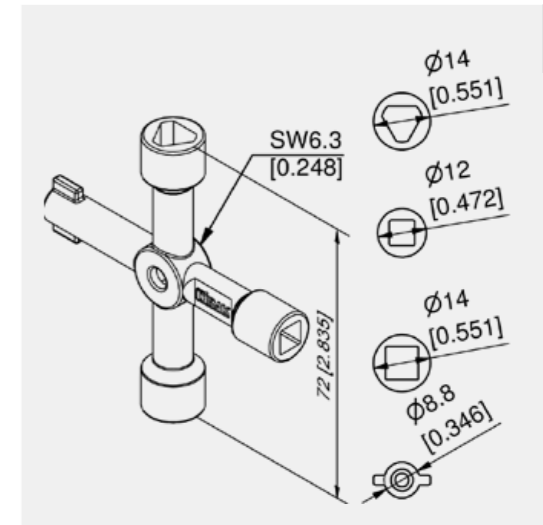


**Advantages**

- Multi Key for 4 inserts: Triangular 8mm, Square 6mm, Square 8mm, Double bit 5mm

**Materials**

- **Multi Key:** zinc die, zinc plated



Multi Key

Part Number	Type	Material	Surface
204-0701.07-07500	Multi Key for Inserts	zinc die	zinc plated

Universal Rail Key Stainless Steel

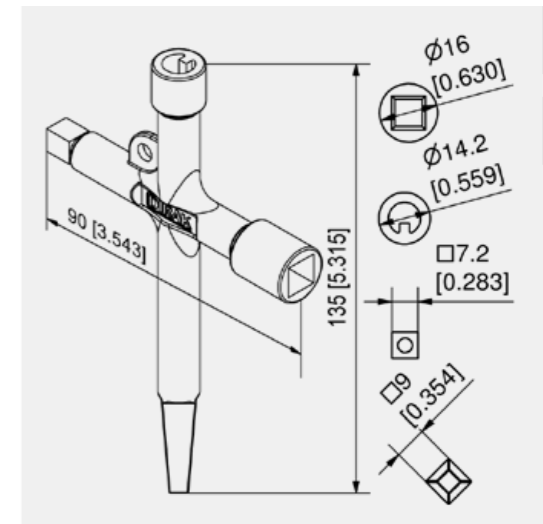


**Advantages**

- Universal key for railway applications.
- Designed for increased leverage for hard to turn lock.
- One tool for 4 inserts: Conical square insert (Berne key), Socket square 7.6mm insert (UK insert), DÜWAG insert, Conical square 9mm.
- Intergrated eyelet for attaching key ring or key bands.

**Materials**

- **Universal rail key:** stainless steel, untreated



Rail key

Part Number	Insert	Material	Surface
204-0702.80-00000	Universal	stainless steel	untreated



**Advantages**

■ Keys for Quarter-Turns, 200 and 220 series and for inserts see product system 2-141.

**Materials**

- A), B), and C)
  - **Key:** zinc die, untreated
- D) and E)
  - **Polyamide key:** PA, black
- F)
  - **Key:** zinc die, nickel plated
- G)
  - **Key SW13:** zinc die, untreated or blue, powder-coated
- H)
  - **PZ building key:** PS, black

**Key form A**

Part Number	Name	Insert	Material	Surface
204-0107.00-00000	double bit for pin	Double bit 3mm pin	zinc die	untreated
204-0108.00-00000	double bit for pin	Double bit 5mm pin	zinc die	untreated

**Key form B**

Part Number	Name	Insert	D	Material	Surface
204-0102.00-00000	female key	Square 7mm		zinc die	untreated
204-0103.00-00000	female key	Square 8mm		zinc die	untreated
204-0104.00-00000	female key	Triangular 7mm	14.2 mm	zinc die	untreated
204-0105.00-00000	female key	Triangular 8mm		zinc die	untreated
204-0106.00-00000	female key	Triangular 6.5mm CNOMO	14.2 mm	zinc die	untreated
204-0109.00-00000	female key	Daimler Benz type	11.5 mm	zinc die	untreated
204-0110.00-00000	female key	Crown type	15.9 mm	zinc die	untreated
204-0111.00-00000	female key	Square 6mm		zinc die	untreated
204-0112.00-00000	female key	Triangular 6.5mm		zinc die	untreated
204-0113.00-00000	female key	Triangular 9mm EDF	15.9 mm	zinc die	untreated
204-0116.00-00000	female key	Crescent czech	15.9 mm	zinc die	untreated
204-0119.00-00000	male key	Male square 6mm		zinc die	untreated
204-0120.00-00000	male key	Male square 7mm		zinc die	untreated
204-0121.00-00000	male key	Male hex. 8mm		zinc die	untreated
204-0133.30-00000	male key	Male hex. 8mm (5/16")		zinc die	untreated
204-0134.30-00000	female key	Hex. 7/16"	15.6 mm	zinc die	untreated
204-0139.00-00000	female key	Hex. SW10	15.9 mm	zinc die	untreated

**Key form C**

Part Number	Name	Insert	Material	Surface
204-0501.00-00000	female key	Square 6mm	zinc die	untreated
204-0502.00-00000	female key	Triangular 6.5mm	zinc die	untreated

**Key form D**

Part Number	Name	Insert	Material	Surface
204-0407.03-00000	double bit for pin	Double bit 3mm pin	PA	black
204-0408.03-00000	double bit for pin	Double bit 5mm pin	PA	black

**Key form E**

Part Number	Name	Insert	D	Material	Surface
204-0401.03-00000	female key, hollow (logo both sides)	Square 6mm	11.5 mm	PA	black
204-0402.03-00000	female key, hollow (logo both sides)	Square 7mm	15.5 mm	PA	black
204-0403.03-00000	female key, hollow (logo both sides)	Square 8mm	15.5 mm	PA	black
204-0404.03-00000	female key, hollow (logo both sides)	Triangular 6.5mm	11.5 mm	PA	black
204-0405.03-00000	female key, hollow (logo both sides)	Triangular 7mm	15.5 mm	PA	black
204-0406.03-00000	female key, hollow (logo both sides)	Triangular 8mm	15.5 mm	PA	black
204-0409.03-00000	female key, hollow (logo both sides)	Blade 10 x 1,4		PA	black

**Key form F**

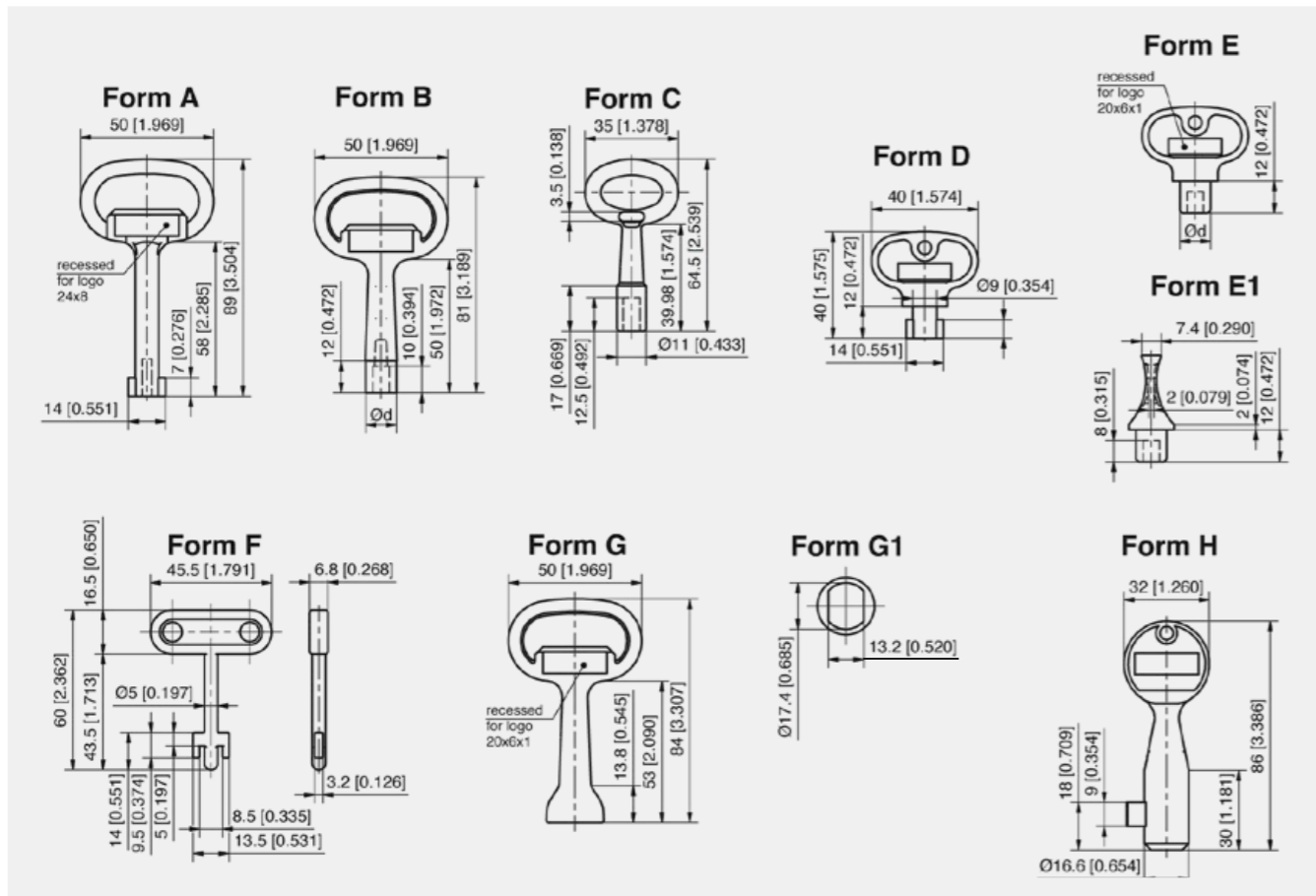
Part Number	Name	Insert	Material	Surface
204-0302.42-00000	FIAT key	FIAT	zinc die	nickel plated

**Key form G**

Part Number	Name	Insert	Material	Surface
204-0140.00-00000	female key	SW13	zinc die	untreated
204-0140.39-05010	Key SW13	SW13	zinc die	blue, powder-coated

**Key form H**

Part Number	Name	Material	Surface
204-0301.00-00000	PZ building key	PS	black





**Advantages**

- Door catcher with catch pin, 2-parts.
- Adjusts "door to frame" always in the right position to each other.
- Applicable horizontally and vertically.
- Applicable where cabinets being exposed to dynamic loading (e.g. vibrations and shocks).
- A locking of the door will remain - even if vibrations loads occur.
- A "hanging" of the door will be balanced.
- The door-part will be screwed onto a welding stud, M8.
- The frame-part will be mounted with screws, M6.

**Materials**

■ Door catcher with catch pin: stainless steel AISI 316Ti

**Remarks**

1. catch pin
2. door catcher

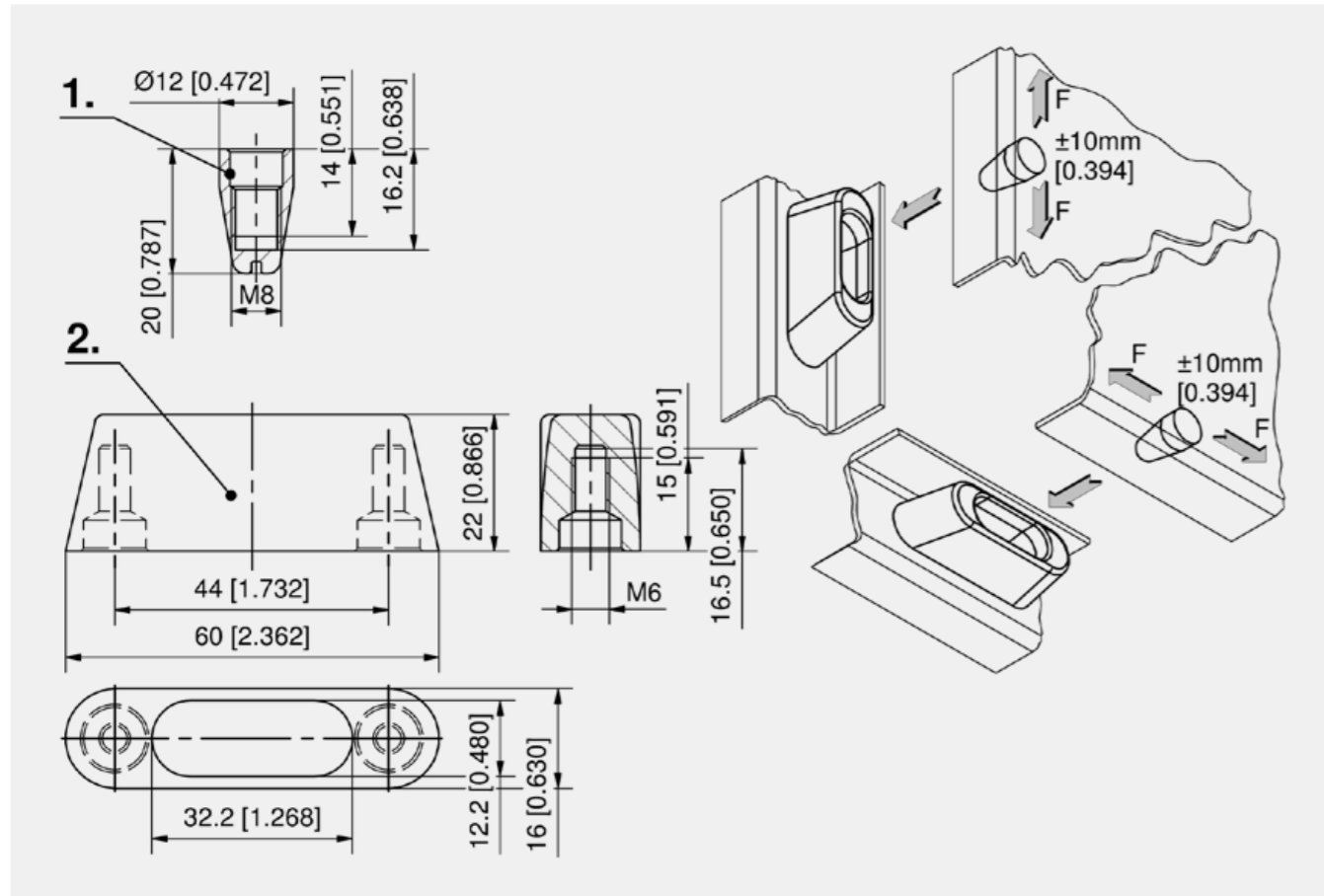


**Advantages**

- Self adhesive drawing pocket for heavy duty applications.
- a) with two 6mm holes, A4 format.
- b) with two 9x6mm oblong holes.

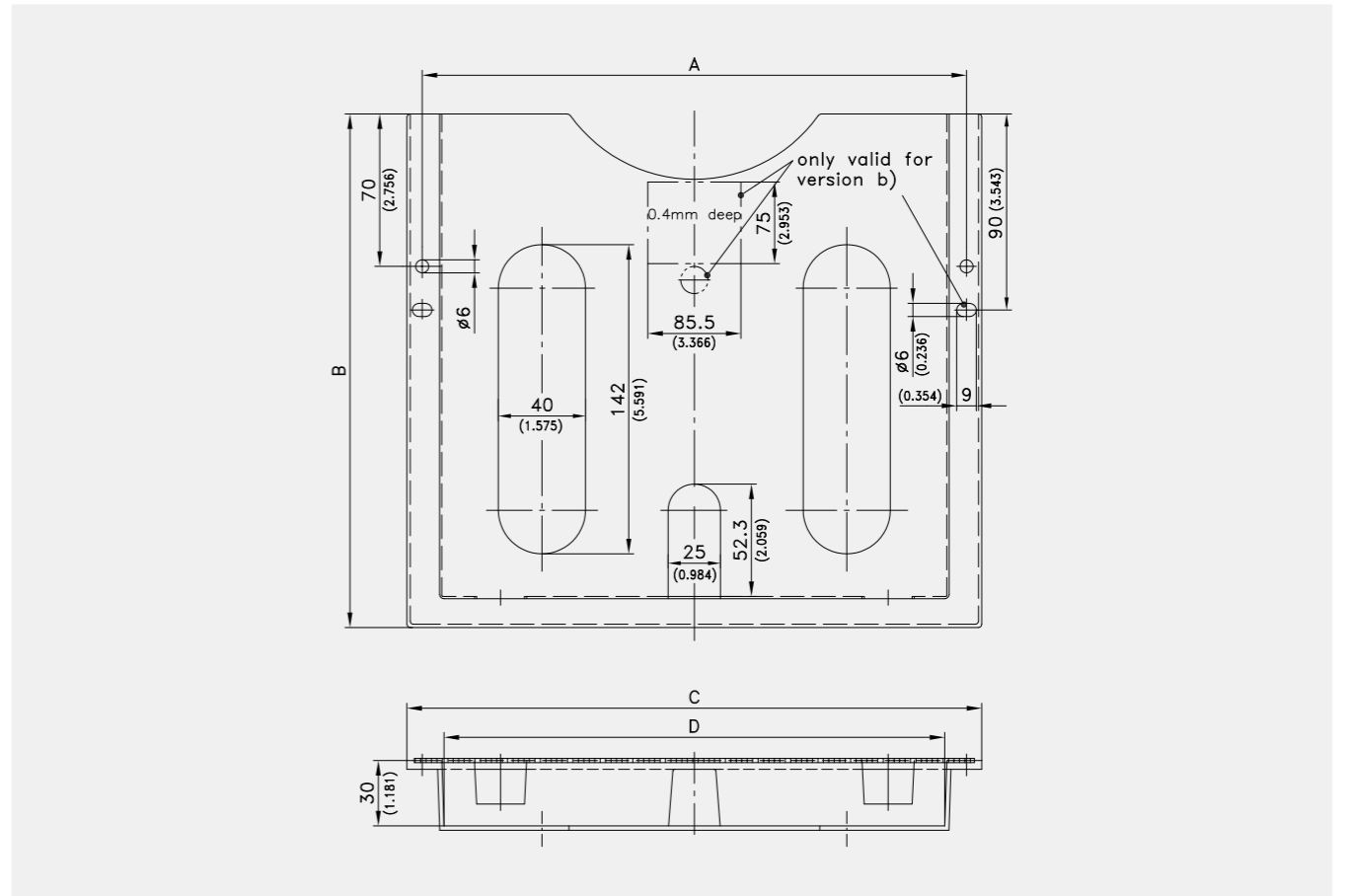
**Materials**

a) and b)  
 ■ Drawing pocket: PS, impact proof



Door Catcher with Catch Pin

Part Number	Material	Vibration-proof	Installation type
241-9201.00-00000	stainless steel	Yes	screw-on



Drawing Pocket

	Part Number	A	B	C	D	Holes	Surface	Installation type
a)	231-9001.00-00000	250 mm	236 mm	264 mm	230 mm	Ø6	grey RAL 7035	self-adhesive / screw-on
b)	231-9004.00-00000	320 mm	248 mm	336 mm	298 mm	9x6	grey RAL 7035	self-adhesive / screw-on
b)	231-9005.00-00000	320 mm	248 mm	336 mm	298 mm	9x6	orange RAL 2000	self-adhesive / screw-on

IP 65  
RoHS WEEE

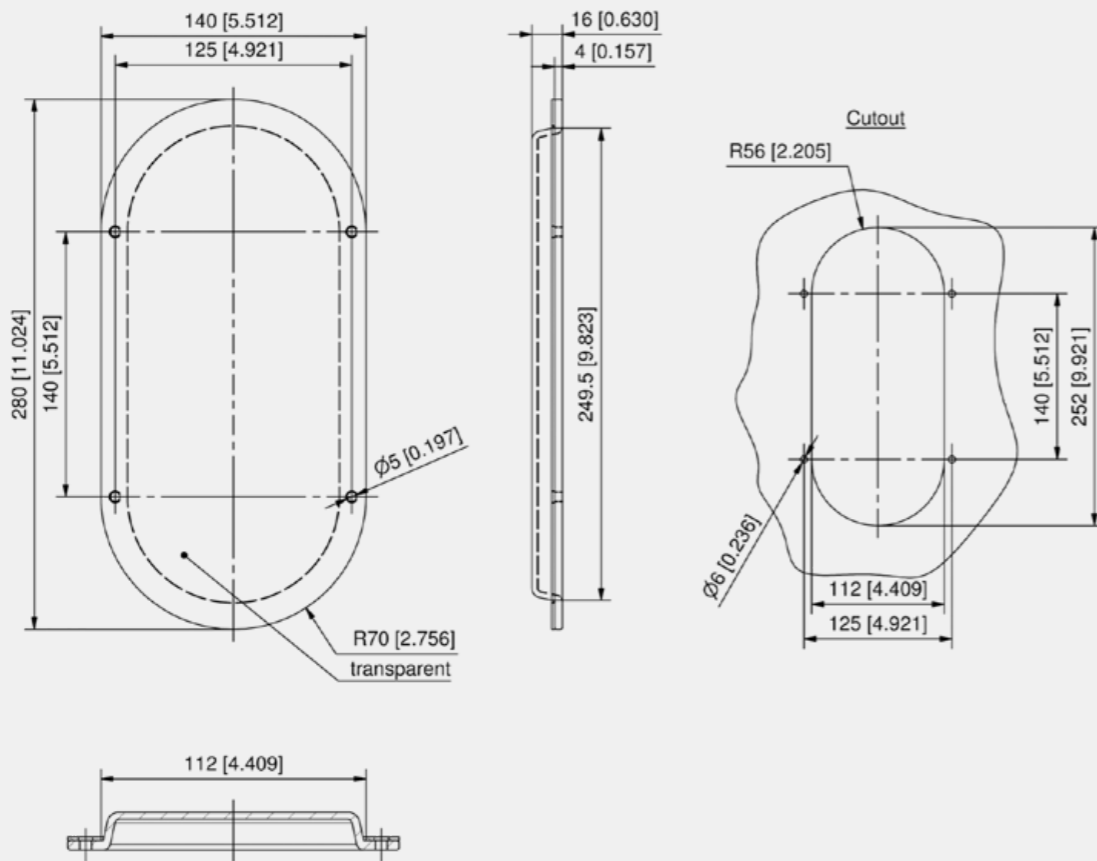


**Advantages**

- Self-adhesive seal.
- 4 holes for flat head screw M5.

**Materials**

- Window:** polycarbonate PC
- Self-adhesive seal:** EPDM, cell sponge rubber



Window

Part Number	Shape	Width	Height	Cutout	Fastening type
251-9101.00-00000	Oval	140	280	112 x 252	self-adhesive/screw-on

IP 65  
RoHS WEEE



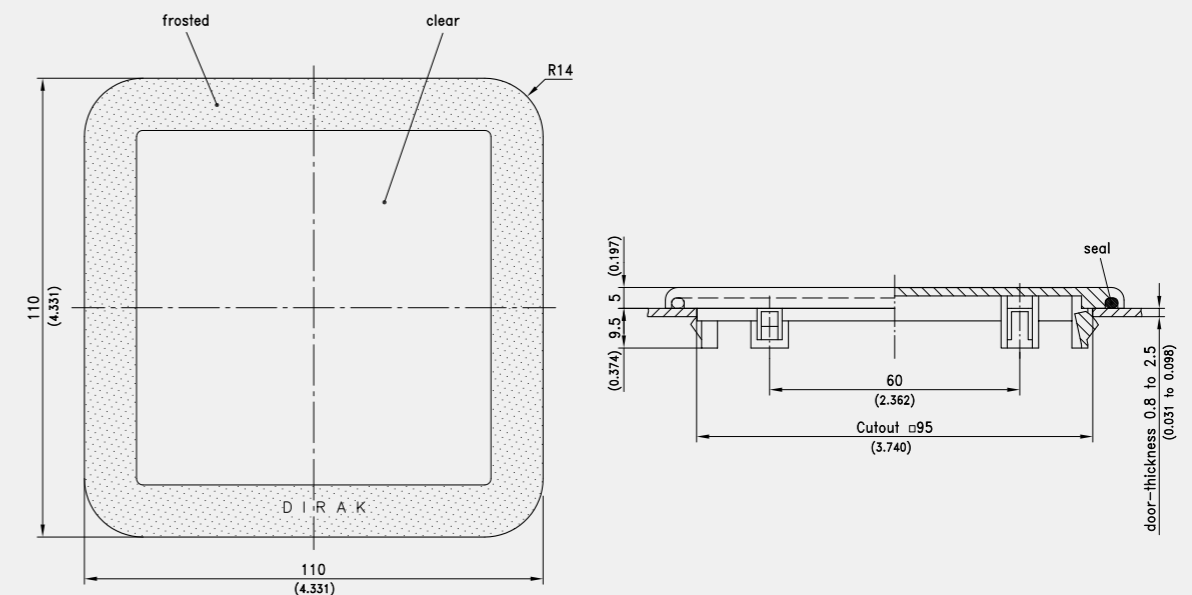
**clip-in**

**Advantages**

- Window, clip-in, for door-thickness 0.8 to 2.5mm (0.031 to 0.098).
- Version with sealing is IP65 according to DIN EN 60529.

**Materials**

- Window:** polycarbonate PC
- Seal:** NBR



Window

Part Number	Shape	Version	Door-thickness	Width	Height	Cutout	Fastening type
251-0102.00-00000	square	without Sealing	0.8 - 2.5 mm	110	110	□ 95	clip-in
251-9102.00-00000	square	with Sealing	0.8 - 2.5 mm	110	110	□ 95	clip-in



steel, nickel plated

**Advantages**

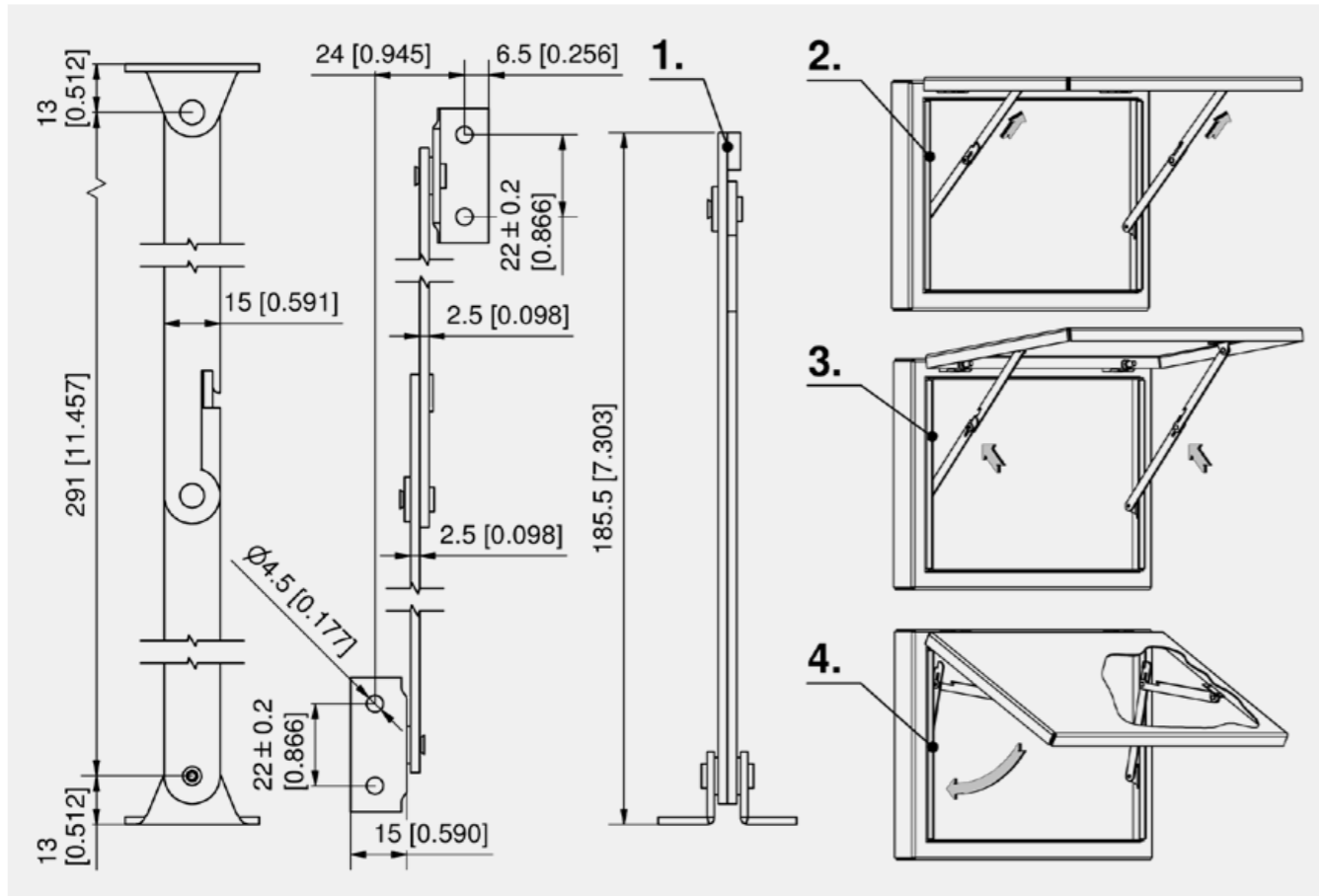
- Cover stay screw-on or weld-on.

**Materials**

- **Cover stay:** steel, nickel plated

**Remarks**

1. snap spike
2. press up to close
3. push in
4. close the flap



Cover Stay

Part Number	Version
230-9101.00-00000	RH
230-9102.00-00000	LH

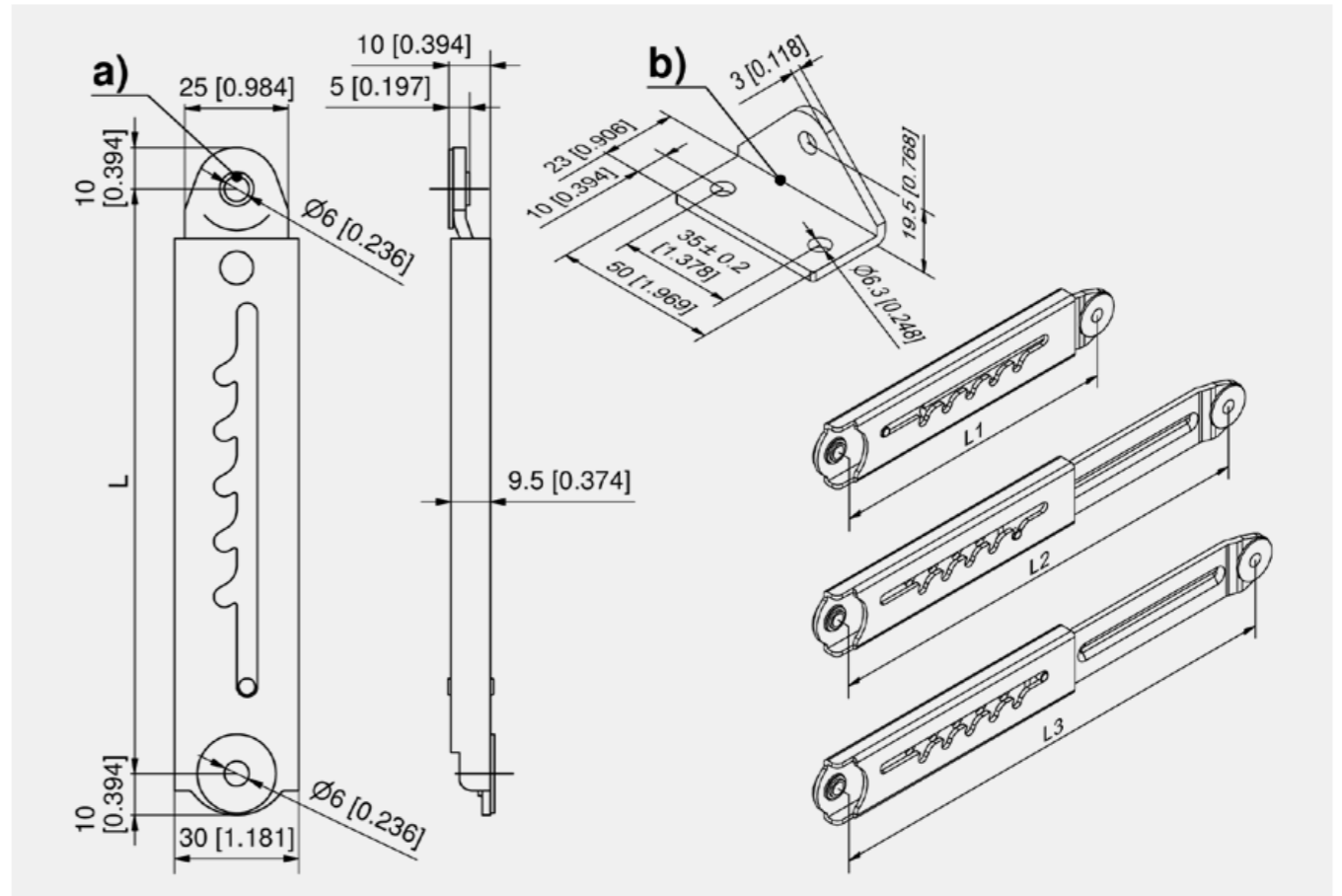


**Advantages**

- Telescopic Cover stay with automatic multiple stops and automatic release in the end position, for desk-leafs and covers.
- RH / LH application.
- To release the mechanism, the cover stay has to be extended completely.
- 2 Spacers for M6 screws included.

**Materials**

- **Telescopic cover support:** steel, zinc plated
- **Mounting angle:** steel, zinc plated



Telescopic Cover Support

	Part Number	Length L1 retracted	1st stop	2nd stop	3rd stop	4th stop	5th stop	6th stop	7th stop	8th stop	9th stop	10th stop	Length L3 extended	Quantity of stops
a)	230-9308.00-00000	140 ± 2	164 mm	177 mm	189.5 mm	202 mm	214.5 mm						230 ± 2	5
a)	230-9309.00-00000	214 ± 2	234.5 mm	248 mm	261 mm	274.5 mm	288 mm	301 mm	314.5 mm	327 mm	340.5 mm	354 mm	374 ± 2	10

Accessories	
+	b) 230-9401.00-00000 Mounting angle



**Advantages**

- Telescopic cover support for covers and desk-leafs.
- Automatic locking and unlocking functionality by guide mechanism.
- Guides separately riveted, locking lever made of stainless steel.
- Robust design.
- RH/ LH application.

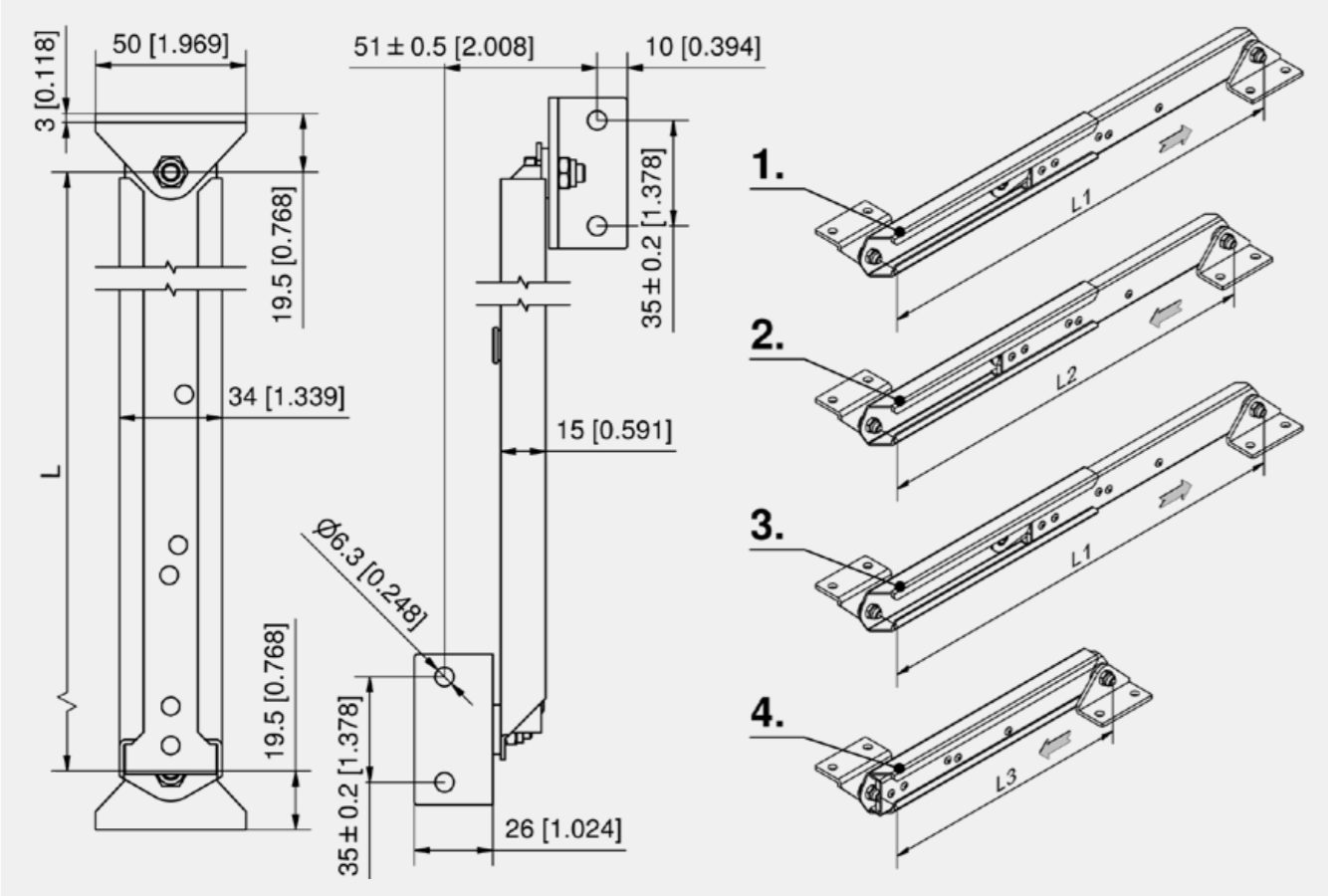
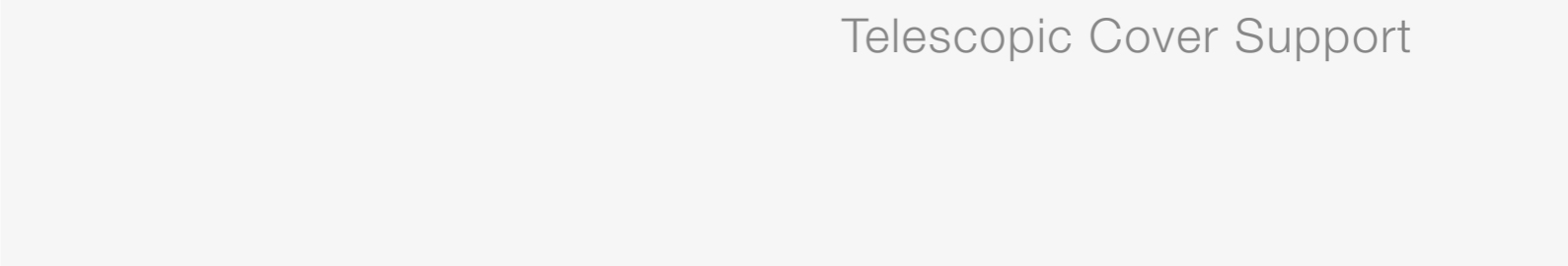
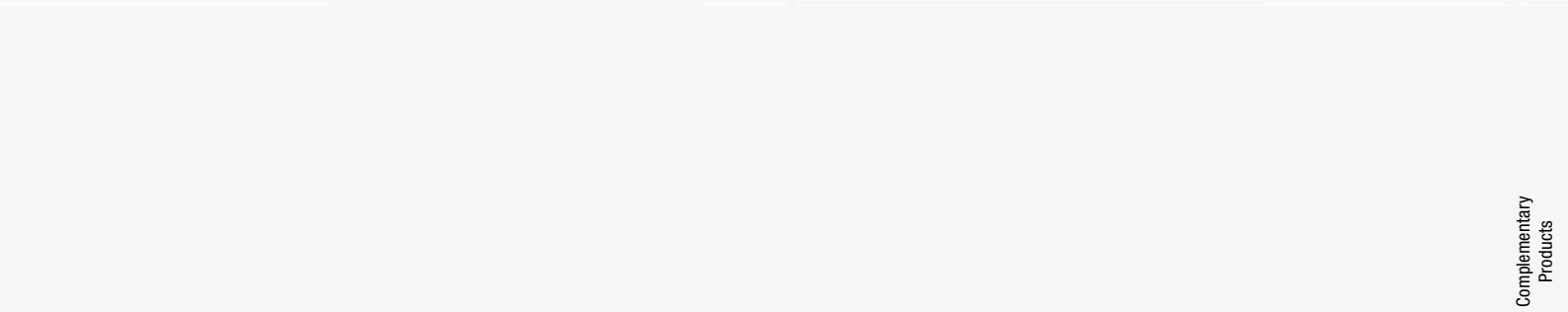
**Materials**

- **Inner- and outer rails, mounting angles and cam plates:** steel, zinc plated
- **Catch lever:** stainless steel (cast)

**Remarks**

1. Alignment of the locking lever by complete extension of the telescopic cover support.
2. After retraction of 3 cm the telescopic cover support snaps in securely.
3. Renewed extension brings the locking lever back into free-run position.
4. The telescopic cover support can be retracted now.

Installation dimensions and example of application see [www.dirak.com](http://www.dirak.com)



Telescopic Cover Support

Part Number	Version	Length L1 extended	Length L2 extended, snapped	Length L3 retracted
230-9001.00-00000	RH/LH	335±2	365±2	215±2
230-9002.00-00000	RH/LH	725±2	695±2	395±2





steel, zinc plated

**Advantages**

- RH and LH application.
- Clicks into place.
- The opening angle is determined by the dimensions X and Y.
- When using two cover stays ring bolts (2) can be screwed on the inside of both locks. After connecting them with a steel wire both cover stays can be unlocked simultaneously.

**Materials**

- **Telescopic cover support:** steel, zinc plated
- **Spring:** stainless steel

**Remarks**

Installation dimensions and example of application see [www.dirak.com](http://www.dirak.com)



**Advantages**

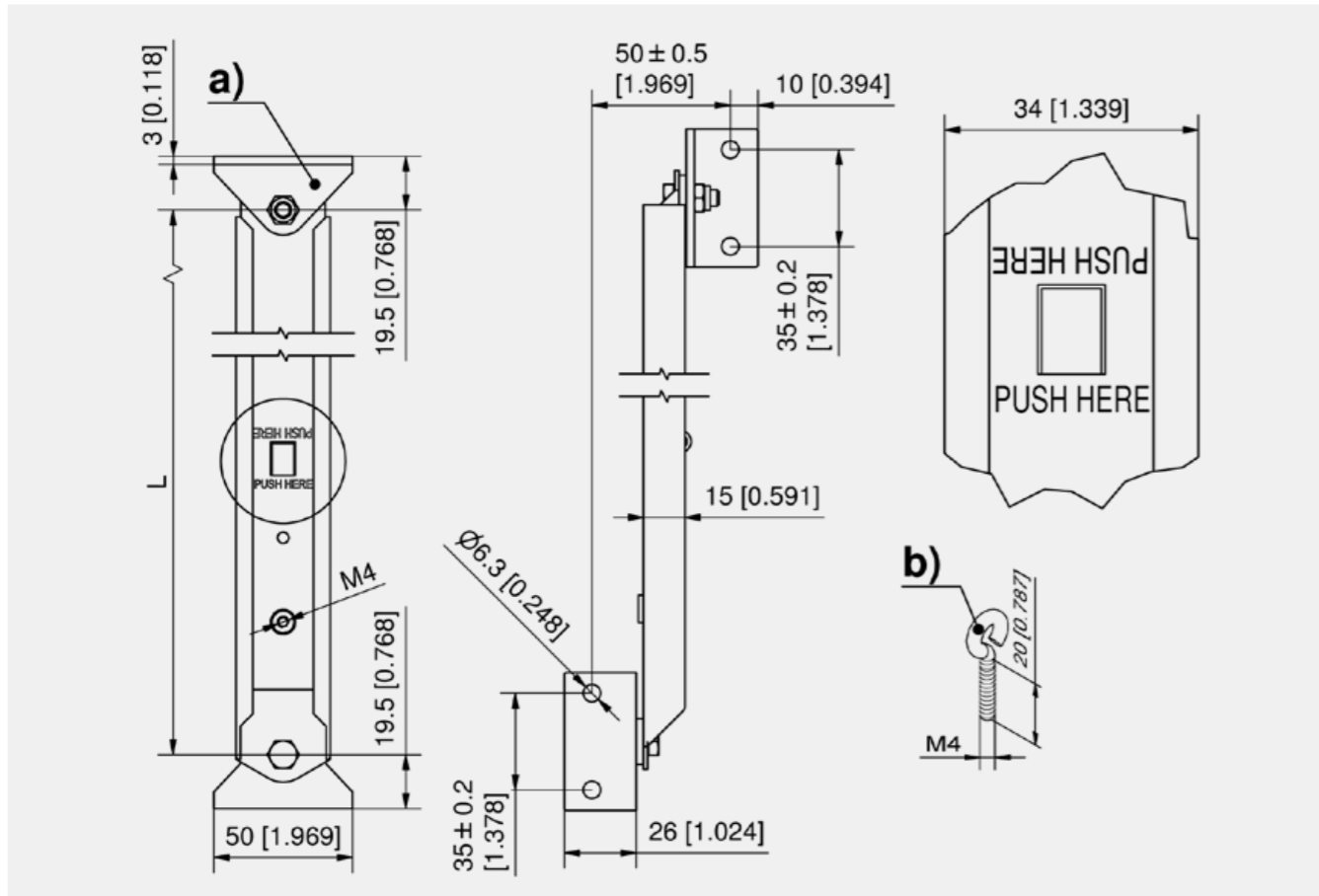
- For doors and lids.
- RH or LH application.
- For wide lids with 2 cover stays you can release the 2 stops by installing 2 eyelets connected by a steel wire.
- Dimensions X and Y determine the opening angle.
- Other length L on request.

**Materials**

- **Outer part, inner part, mounting bracket, snap lever, snap spike, spring and washer:** stainless steel AISI 304
- **Eyelet:** steel, zinc plated

**Remarks**

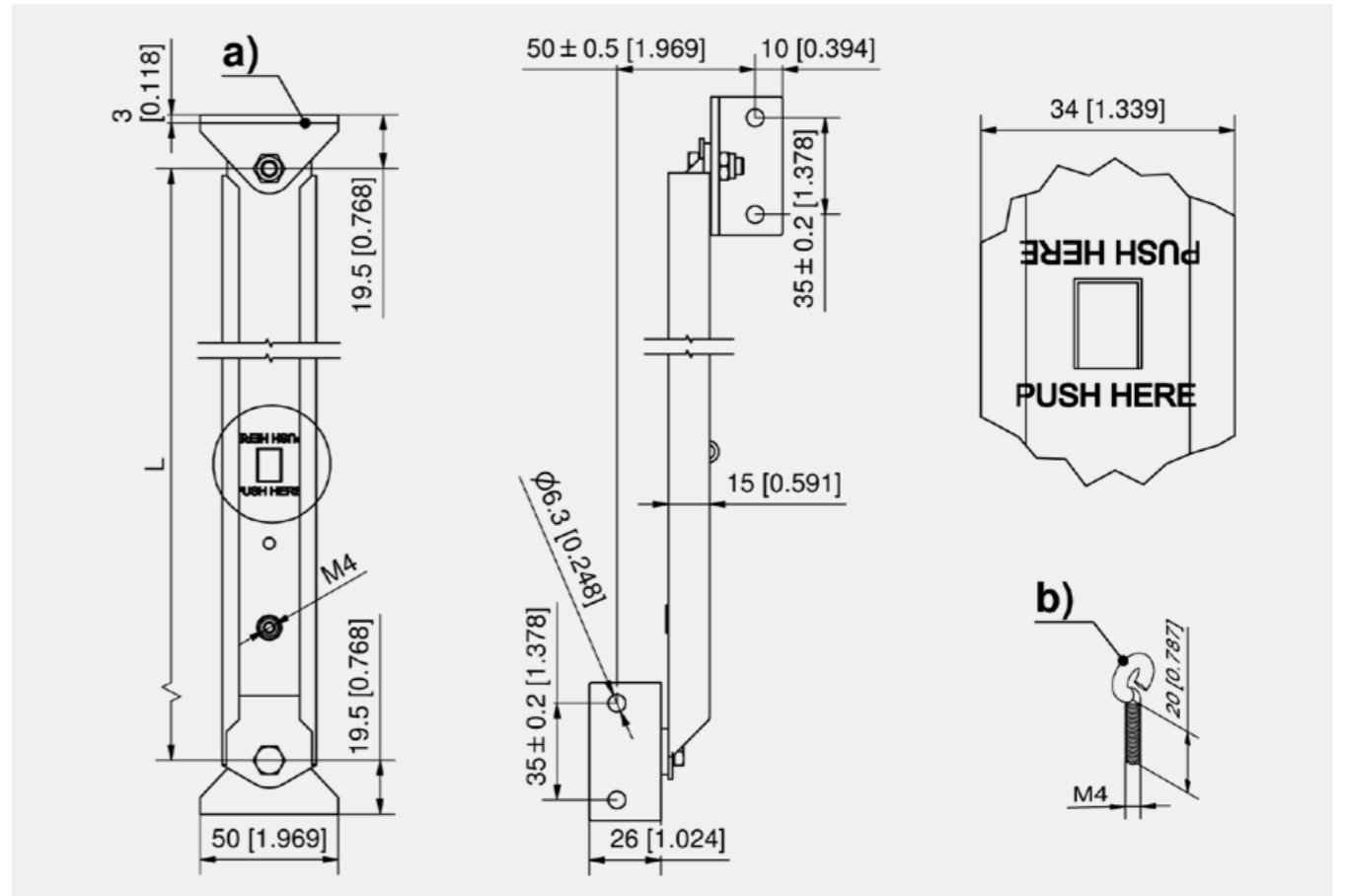
Installation dimensions and example of application see [www.dirak.com](http://www.dirak.com)



Telescopic Cover Support

Part Number	Length L retracted	Length L extended
a) 230-9305.00-00000	370±2	710±2
a) 230-9306.00-00000	215±2	355±2

Accessories	
b) 860-0048.07-00420	Ring bolt



Telescopic Cover Support

Part Number	Length L retracted	Length L extended
a) 230-9501.00-00000	370±2	710±2
a) 230-9502.00-00000	215±2	355±2

Accessories	
b) 860-0048.07-00420	Ring bolt



steel, zinc plated

**Advantages**

- Wind-stop with automatic lock.
- RH or LH application.
- Detailed dimensions see drawing.

**Materials**

- **Wind-stop:** steel, zinc plated

**Remarks**

Installation dimensions and example of application see [www.dirak.com](http://www.dirak.com)



**Advantages**

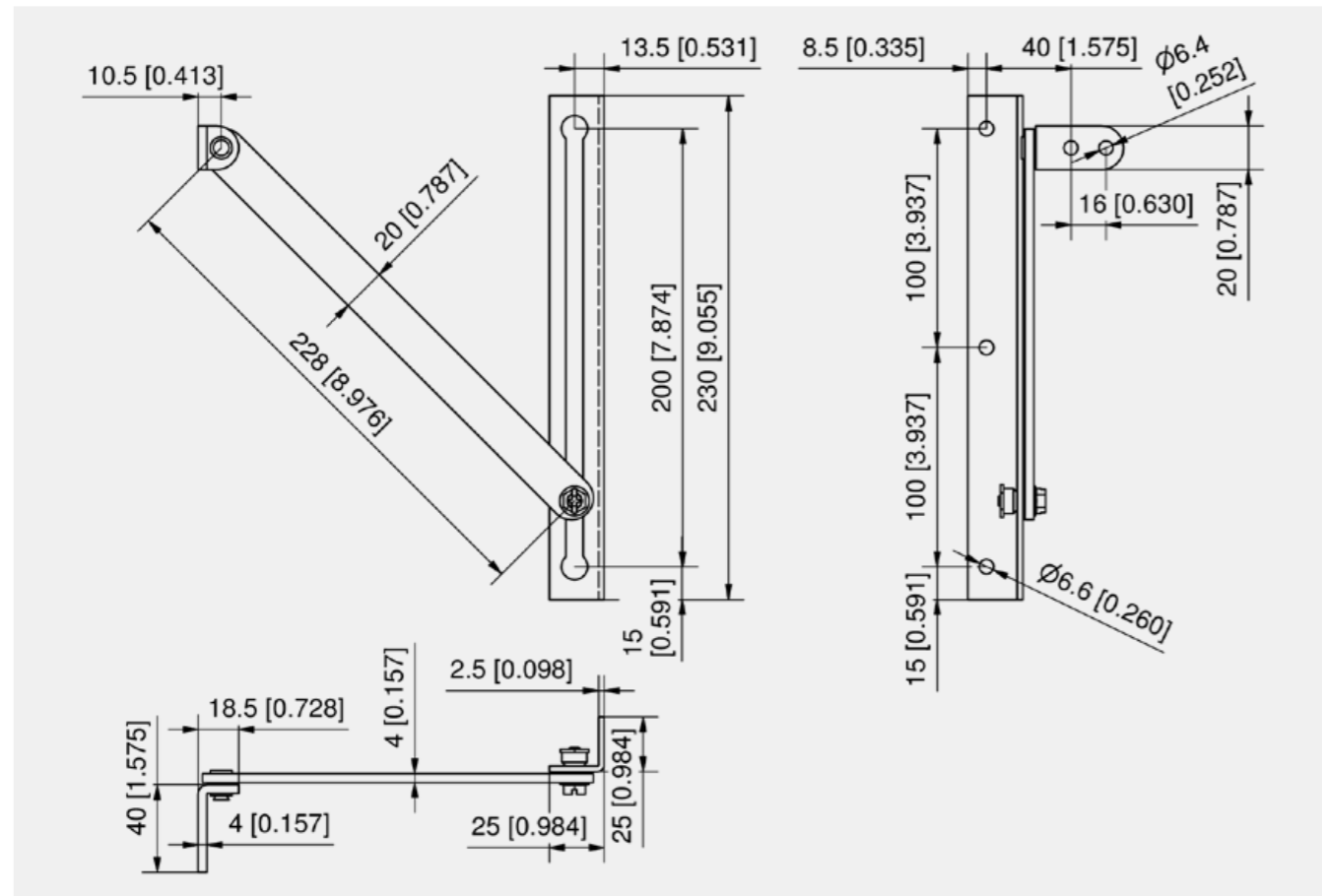
- Wind stop with automatic lock to keep the door open.
- RH or LH application.
- Detailed dimensions see drawing.

**Materials**

- **Wind stop:** stainless steel AISI 304

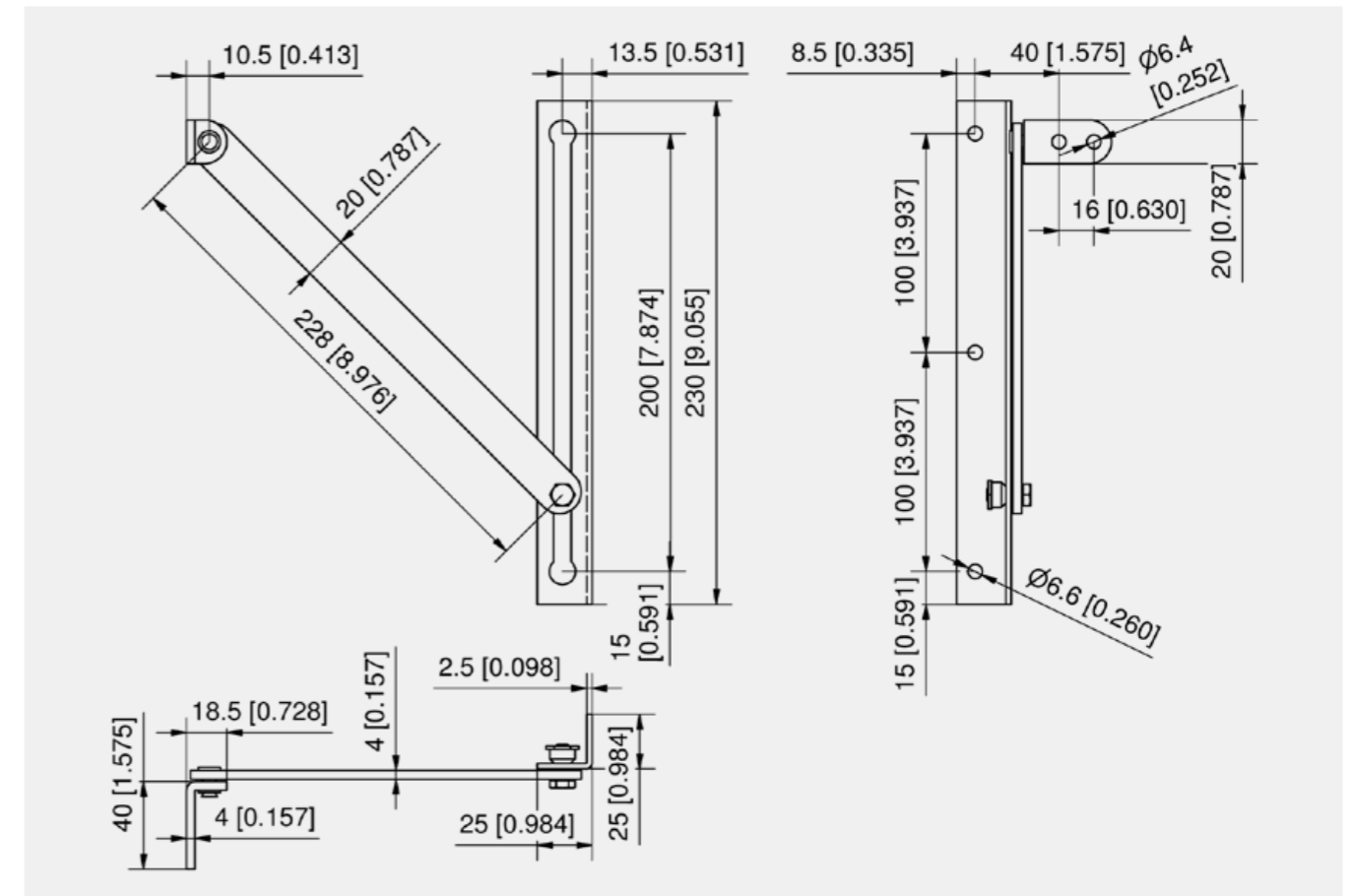
**Remarks**

Installation dimensions and example of application see [www.dirak.com](http://www.dirak.com)



Wind Stop

Part Number	Version	Automatic lock
221-9001.00-00000	RH/LH	Yes



Wind Stop

Part Number	Version	Automatic lock
221-9101.00-00000	RH / LH	Yes



**Advantages**

- Clips into the installation cutout □9.5 or □12.7 for simple installation.
- Tool-less installation.
- The square base (9.2 and 12.5) of the cable tie mount prevents it from turning within the installation cutout.
- Cable tie easily installed through loop.
- Audible click ensures proper secure installation.

**Materials**

■ Cable tie mount: PA, black

**Remarks**

1. = Cable tie

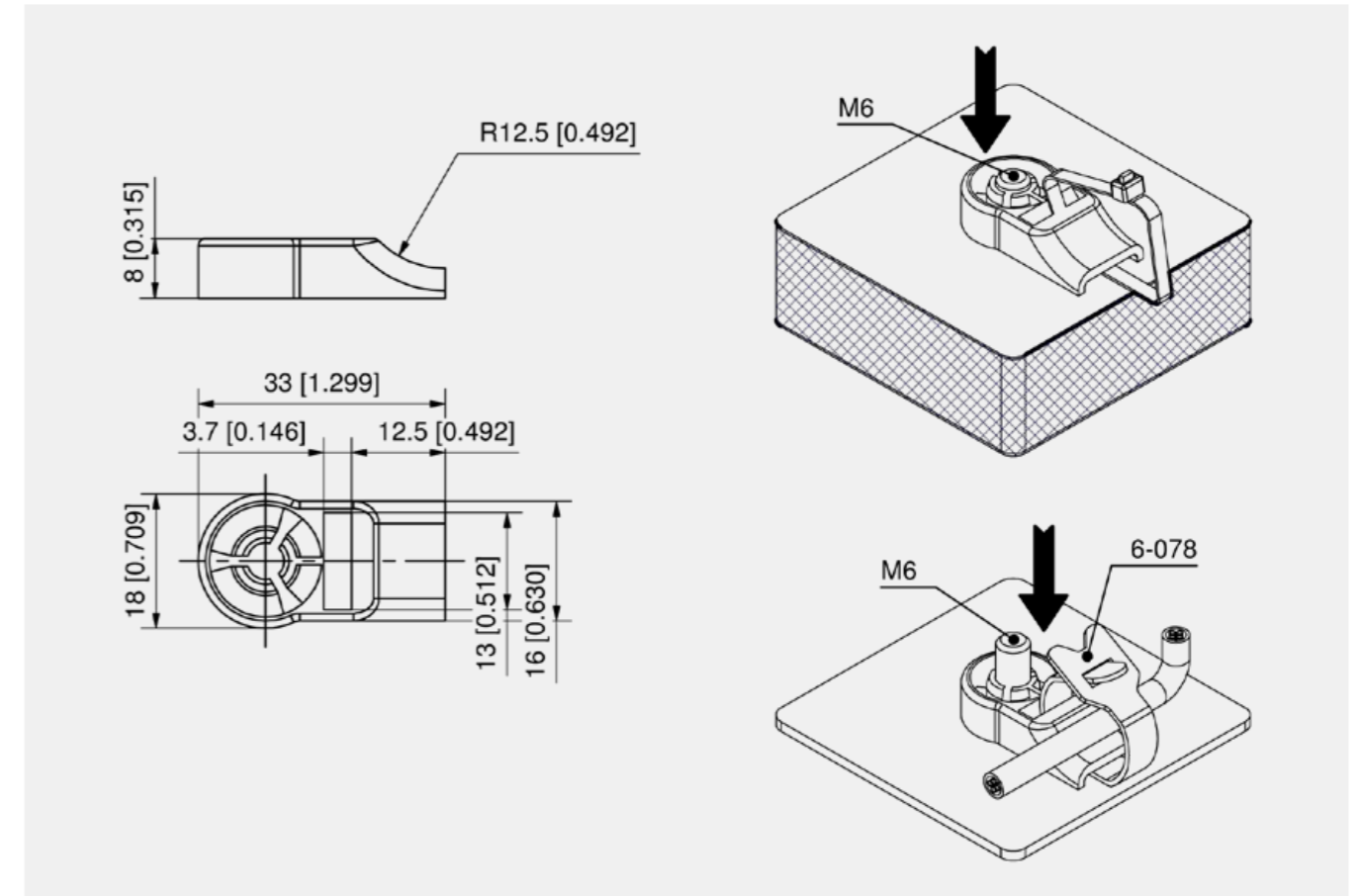
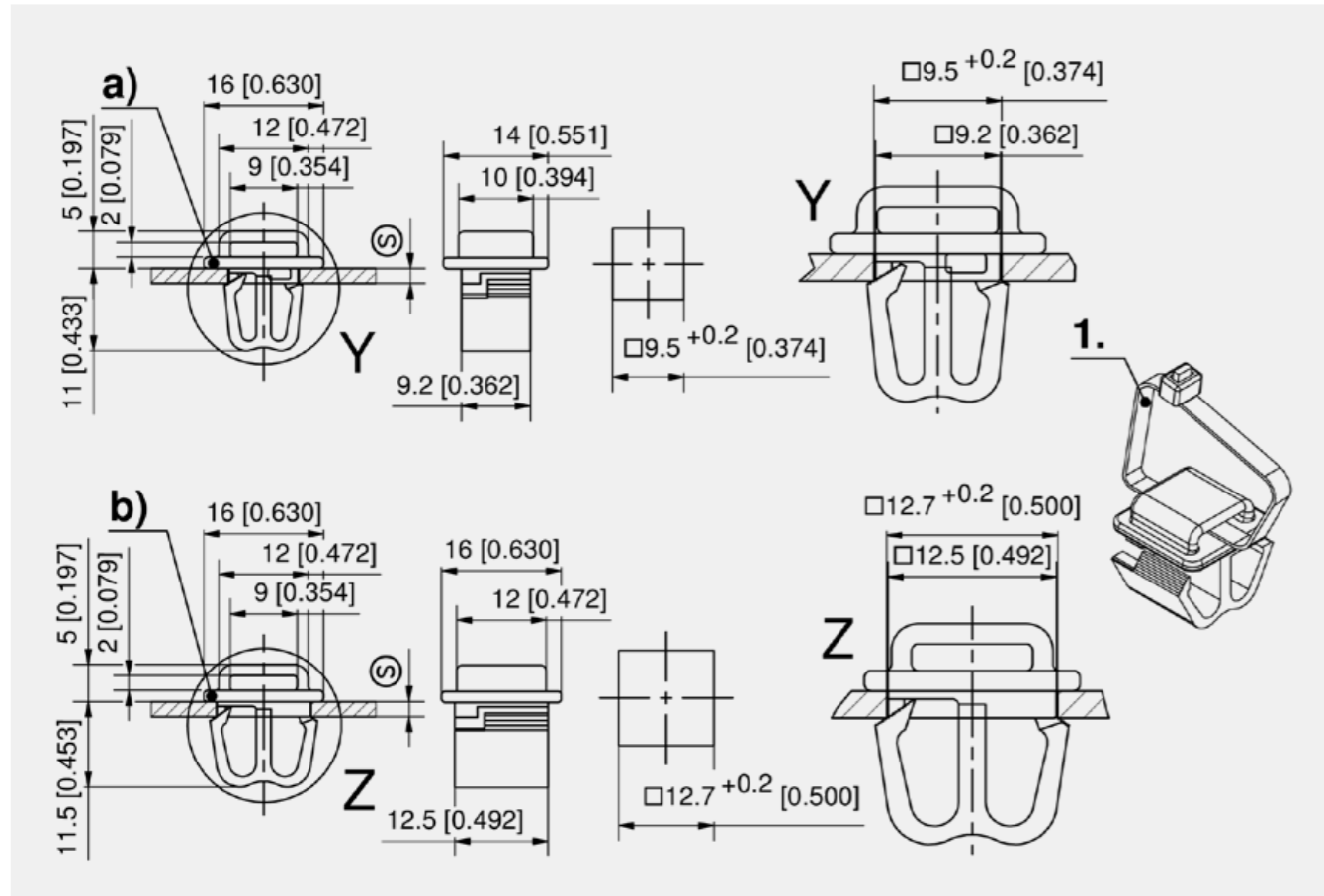


**Advantages**

- Cable tie mount for quick, tool-less assembly onto a M6 weld stud.
- Simple insertion of the cable tie through the upper insertion opening.
- Tool-less installation.
- Secure fit in any position on the weld stud.
- Can be removed by simply unscrewing counter clockwise.

**Materials**

■ Cable tie mount: PA, black



Cable Tie Mount

	Part Number	Cutout	Clamping range	Installation type	Packaging unit
a)	214-0107.51-00000	□9.5	1.5 - 2 mm	tool-less	250 pcs.
b)	214-0107.51-10000	□12,7	1.5 - 2 mm	tool-less	250 pcs.

Accessories	
+	6-078 Velcro Cable Tie

Cable Tie Mount

Part Number	Installation type	Packaging unit
214-0111.51-00000	tool-less	250 pcs.

Accessories	
+	6-078 Velcro Cable Tie

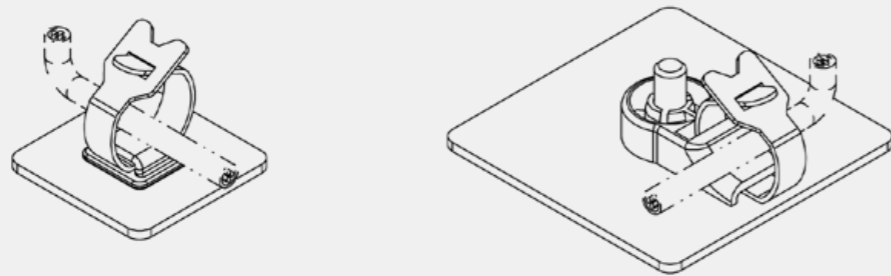
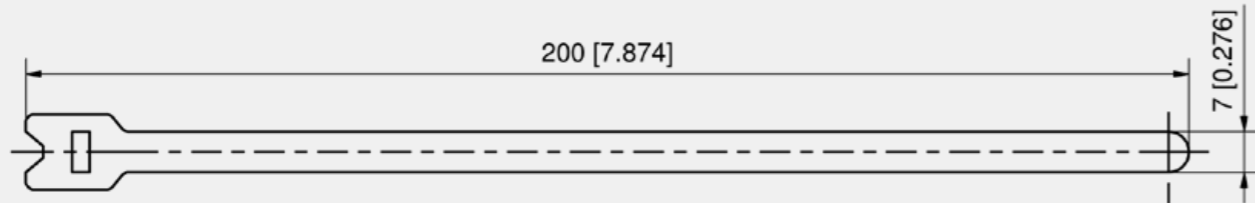


**Advantages**

- Velcro cable ties can be easily inserted into the holes in the cable tie bracket 6-068 and 6-070.
- Flexible application allows cables, supply lines and hoses to be wrapped easily, effectively and without tools.
- Can be reused multiple times.
- Protects sensitive materials from damage.
- Soft and flexible material.

**Materials**

- **Velcro cable tie:** PP and Velour, black
- **Peel back force:** 0.4 Ncm
- **Shear force:** 7.0 Ncm
- **Tensile strength:** 120 Ncm
- **Melting point:** 150°C



Velcro Cable Tie

Part Number	Version	Packaging unit
214-0112.00-00050	Length 200mm	50 pcs.

Accessories	
+	6-070 Cable Tie Mount □9.5 and □12.7
	6-068 Cable Tie Mount



**Advantages**

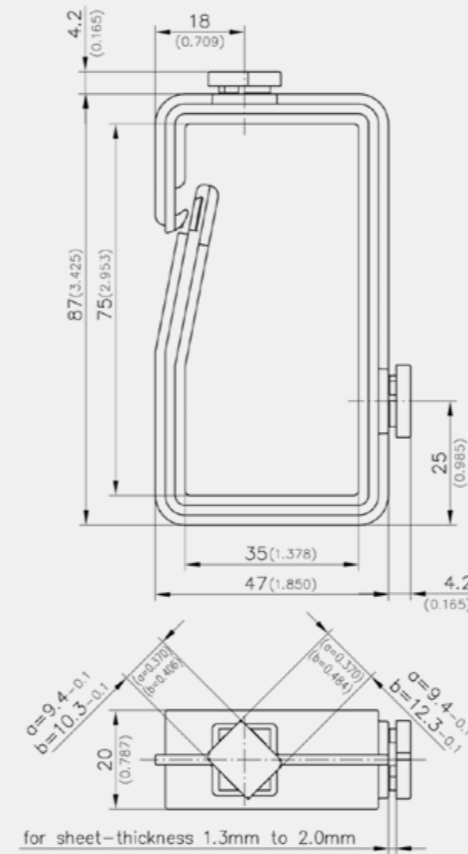
- Wire catches can be fitted onto pre-punched channels / profiles.
- Improves handling of power, network and fiber optic cables in the cabinet.
- Tool-less installation.
- Easy installation in a suitable square hole by turning 45°.
- The jamming of the bow parts in the range of the opening when the cable support is filled.
- For sheet-thickness 1.3 mm to 2.0 mm.

**Materials**

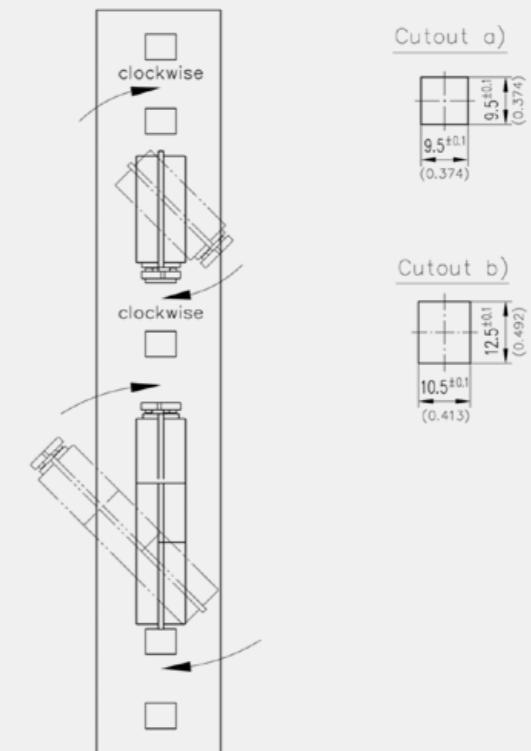
- **Wire catch:** PA, black

**Remarks**

**Assembly:** enter the wire catch in an angle of about 45° into the cutout and turn 45° clockwise. At this end position the special shape makes the wire catch fixed in the cutout.



Example of application



Wire Catch

	Part Number	Cutout	Installation type
a)	214-0106.50-00013	□9.5	tool-less
b)	214-0105.50-00013	12.5x10.5	tool-less



**Advantages**

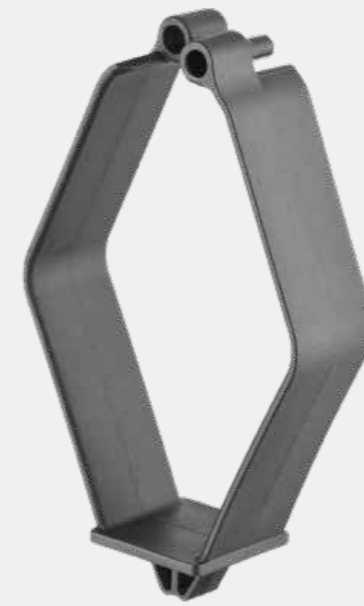
- Cable management device for clipping onto a cutout of □ 9.5 with an additional DST fastener e.g. rail frame.
- Tool-less installation.
- Prevents the cable management device from turning.
- Can be opened or closed from the front in order to facilitate inserting or removing of the cables.
- Horizontal / vertical use.
- The (S) dimension indicates the total thickness of the sheet metal panels.

**Materials**

■ **Cable management device:** PA, black

**Remarks**

- b) = Fastener
- 1. = open
- 2. = closed



**Advantages**

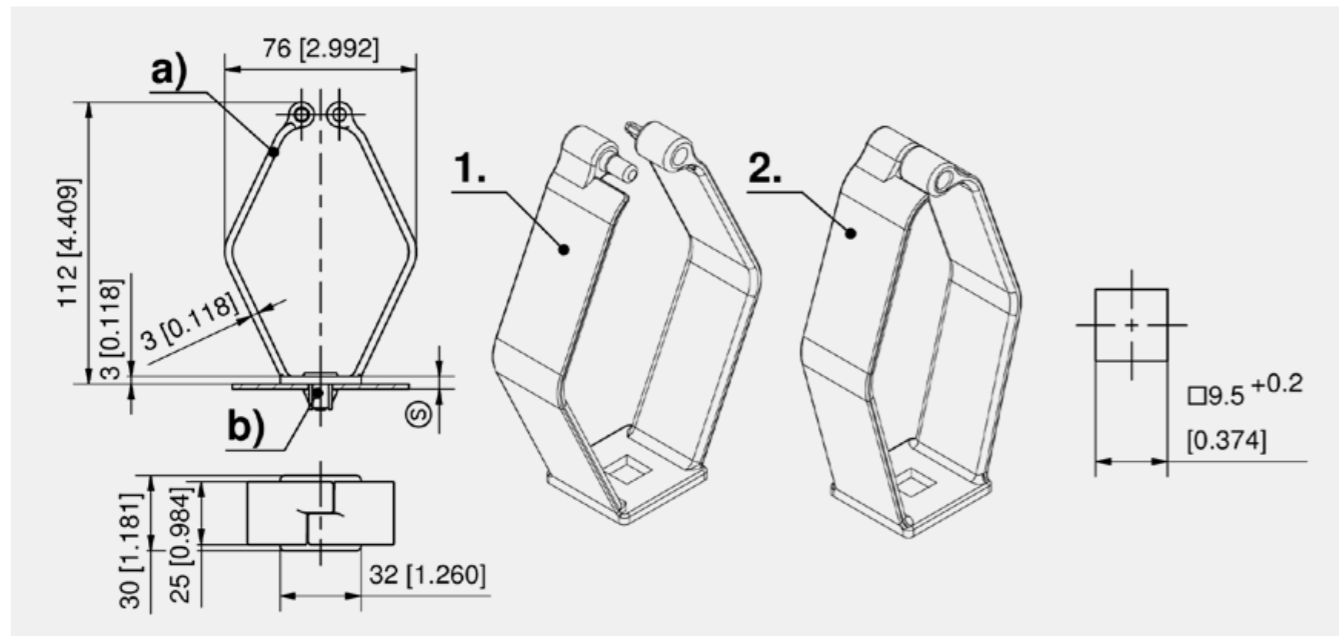
- Clip-in cable management device for a cutout of □ 12.7, e.g. rail frame.
- Tool-less installation.
- The square base 12.5 of the cable management device prevents it from turning within the installation cutout.
- Can be opened or closed from the front in order to facilitate inserting or removing of the cables.
- Horizontal / vertical use.

**Materials**

■ **Cable management device:** PA, black

**Remarks**

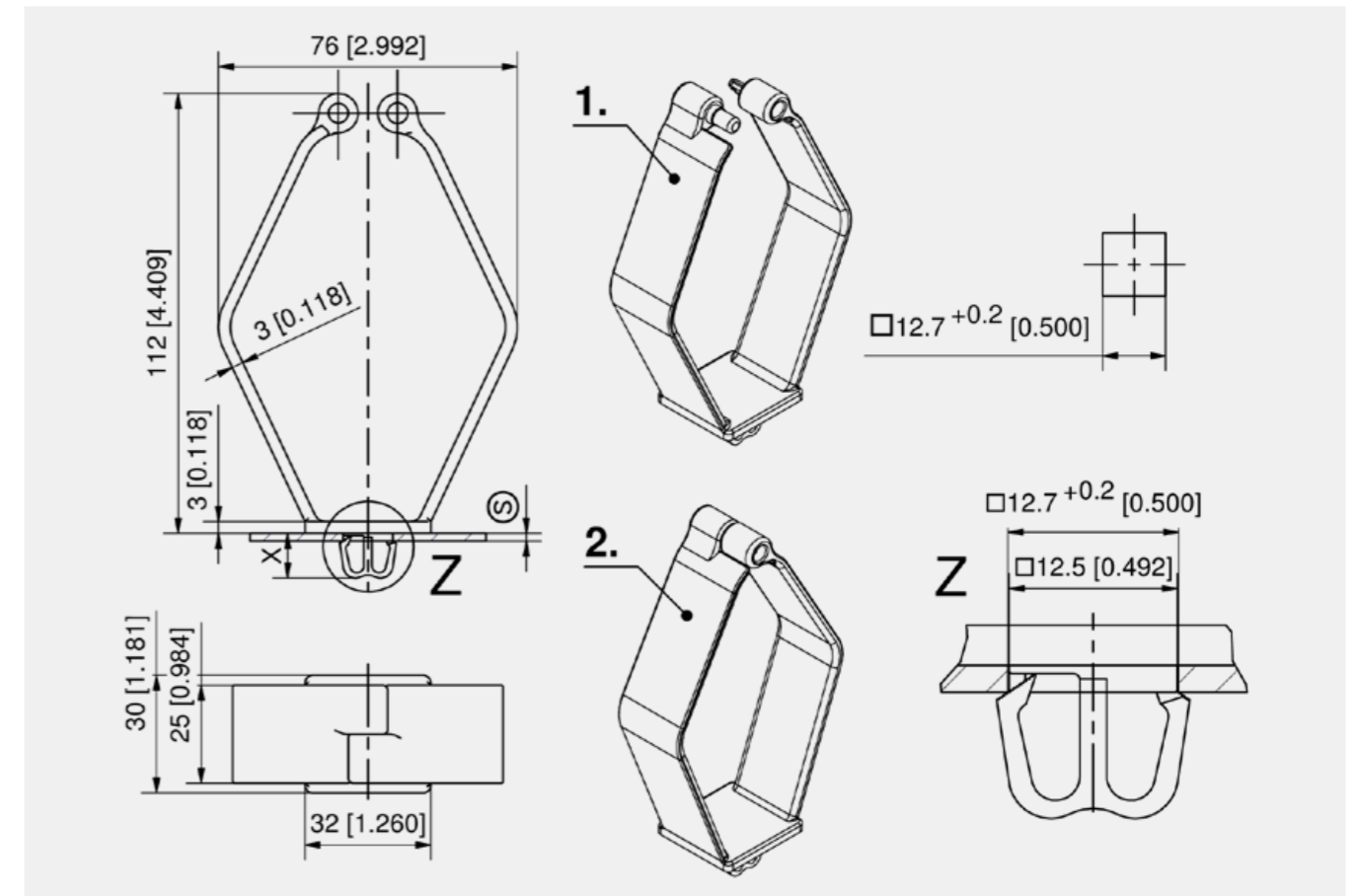
- 1. = open
- 2. = closed



Cable Management Device

Part Number	Version	Cutout	Installation type	Packaging unit
a) 214-0108.51-00000	max. clamping range 6.4mm	□9.5	tool-less	100 pcs.

Accessories	
b) 1-041.05DST DST Fastener □ 9.5 with leaf spring	
b) 1-041.04DST DST Fastener □ 9.5 without leaf spring	
6-065 Clip-on Radius R30	



Cable Management Device

Part Number	Cutout	Installation type	Clamping range	Dimension X	Packaging unit
214-0108.51-20000	□ 12.7	tool-less	1.5 - 2 mm	11.4 mm	100 pcs.

Accessories	
6-065 Clip-on Radius R30	

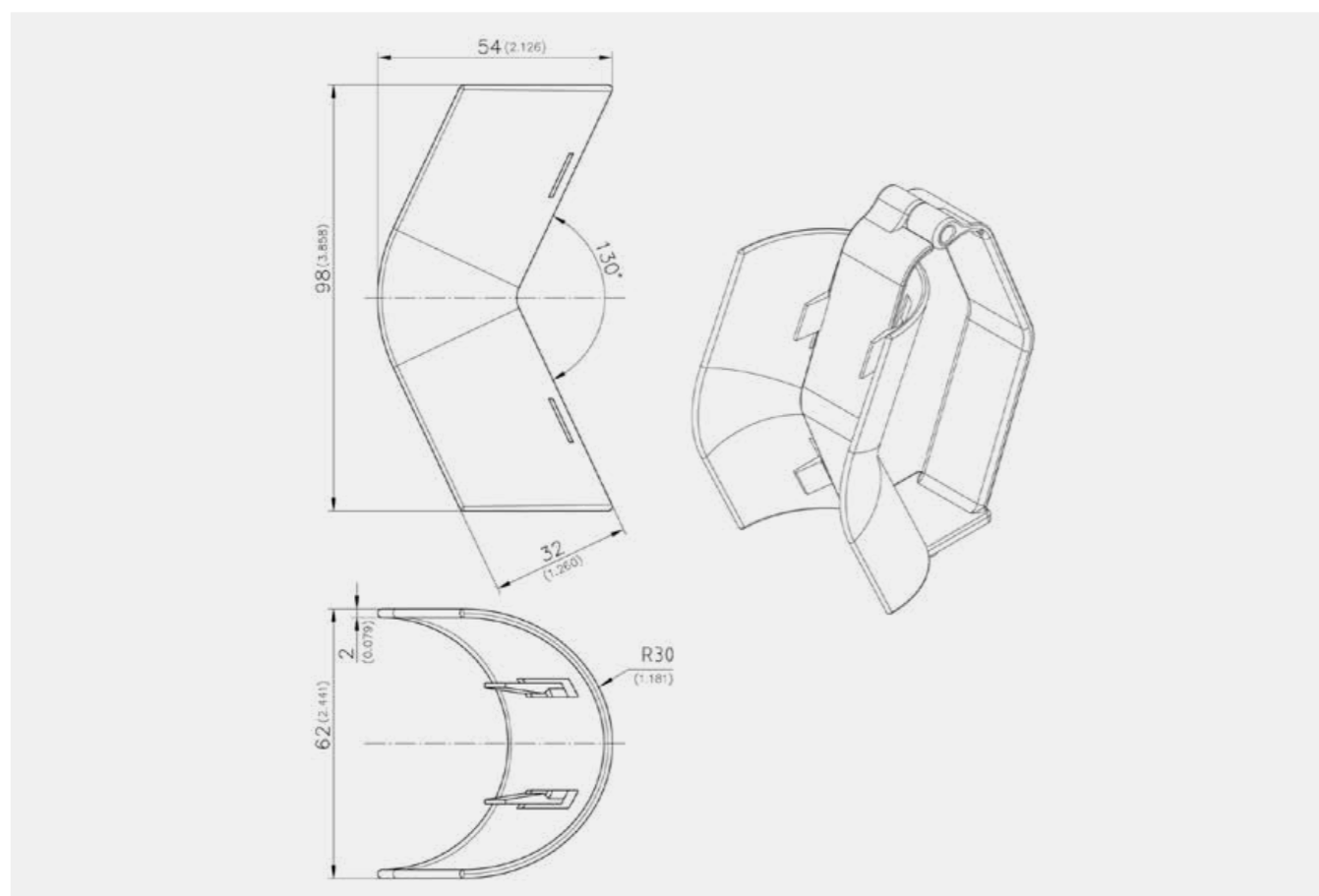


**Advantages**

- Clip-on radius for cable management device 6-061 and 6-062.
- Tool-less installation.
- Simplifies wiring of horizontal power, network and fiber optic cables in the cabinet.
- Easily guides cables around corners with gentle radius.
- Protects cables from damage and kinks during wiring.

**Materials**

- **Clip-on radius:** PA, black



Clip-on Radius for Cable Management Device

Part Number	Installation type	Packaging unit
214-0110.51-00000	tool-less	100 pcs.

Accessories	
+	6-062 Cable Management Device □9.5
+	6-061 Cable Management Device □12.7



Universal Rail Key Stainless Steel

See page 757